

# AS1 Series



## Current Operated Switches

### Applications

#### Electronic Proof Of Flow

- Current operated switch eliminates need for multiple pipe or duct penetrations.
- More reliable than electromechanical pressure or flow switches.

#### Conveyors

- Detects jams and overloads.
- Interlocks multiple conveyor sections.

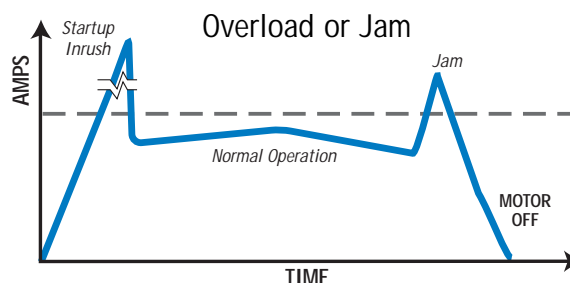
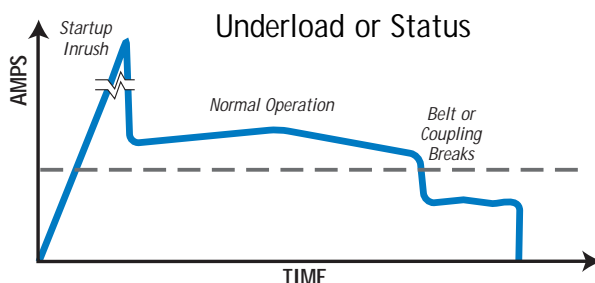
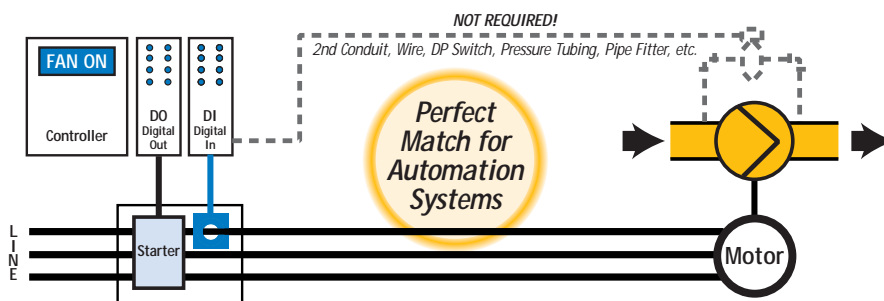
#### Lighting Circuits

Easier to install and more accurate than photocells.

#### Electric Heaters

Faster response than temperature sensors.

MADE IN  
USA



## Current Operated Switches

# AS1 Series

'AS1' Series Current Operated Switches from NK Technologies combine a current transformer, signal conditioner and limit alarm into a single package for use in status monitoring or proof of operation applications. Offering an extended setpoint range of 1-150A and universal, solid-state outputs, the self-powered AS1 can be tailored to provide accurate and dependable digital indication of over-current conditions across a broad range of applications. Available in solid-core enclosure styles or in a split-core case to maximize ease of installation.

### Features

- **Universal Output**
  - N.O. or N.C. solid state switch for applications up to 240 VAC/DC.
  - Compatible with most automation systems.
- **Self-powered**
  - Cuts installation and operating costs.
- **Easily Adjustable Setpoint**
  - Speeds startup.
- **Solid or Split-core Case**
  - Versions tailored for each installation.
- **Built-in Mounting Feet**
  - Simple, two-screw panel mount or attach optional DIN-rail brackets.
- **UL, CUL and CE Approval**
  - Accepted worldwide.

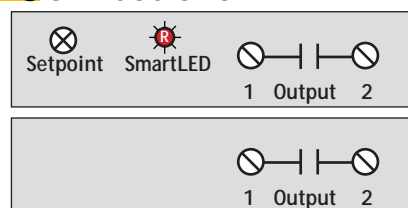
Know your power...  
because with knowledge comes control.

## Specifications

Power Supply	None — Self-powered		
Output	Magnetically Isolated Solid-State Switch		
Output Rating	<div><div></div> N.O. Version: 0.15A @ 240VAC or VDC</div> <div><div></div> N.C. Version: 0.2A @ 135VAC or VDC</div> <div><div></div> Not polarity sensitive</div>		
Off State Leakage	< 10μA		
Response Time	120 ms		
Setpoint Range	<div><div></div> Fixed Core: 1–150A</div> <div><div></div> Split-core: 1.5–150A</div>		
Hysteresis	5% of Setpoint		
Overload	MODEL	6 SEC	1 SEC
	<div><div></div> –GO (NOU)</div>	500A	1,000A
	<div><div></div> –GO (NCU)</div>	400A	1,000A
	<div><div></div> All Other</div>	400A	1,000A
Isolation Voltage	UL Listed to 1,270VAC, tested to 5,000VAC		
Frequency Range	6–100Hz		
Sensing Aperture	<div><div></div> –FF Case: 0.55" (14mm) dia.</div> <div><div></div> –FT Case: 0.74" (19mm) dia.</div> <div><div></div> –SP Case: 0.85" (21.6mm) sq.</div>		
Case	UL 94V-0 Flammability Rated		
Environmental	–58 to 149°F (–50 to 65°C), 0–95% RH, non-condensing		
Listings	UL 508 Industrial Control Equipment (USA & Canada), CE		



## Connections



Typical of  
Models with LED

Typical of  
Go/No-Go Models

### Notes:

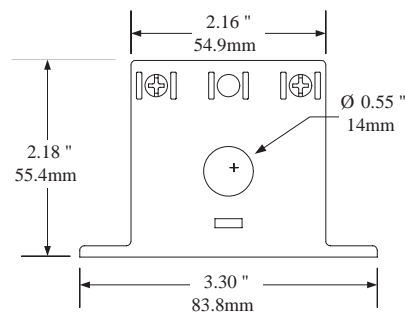
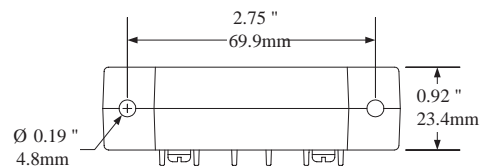
- Terminals are #6 screws.
- Normally open contacts shown (NOU).
- Normally closed contacts similar (NCU).

## Ordering Information

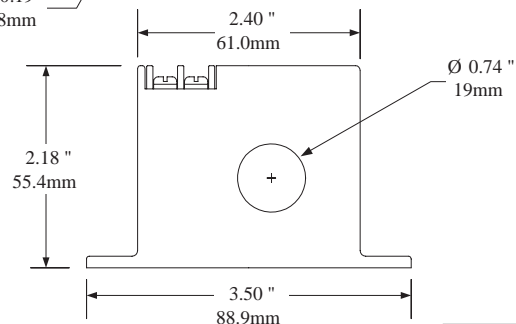
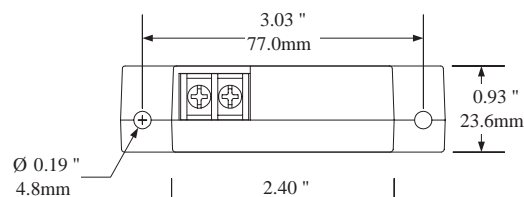
Example: AS1-NOU-SP

Adjustable AC current operated switch, split-core, with indicating LED.

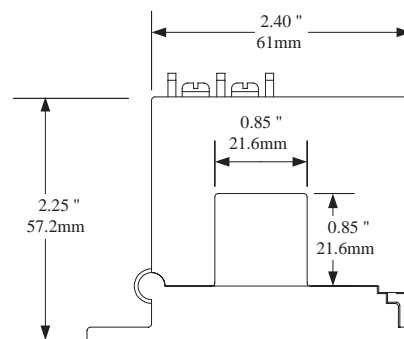
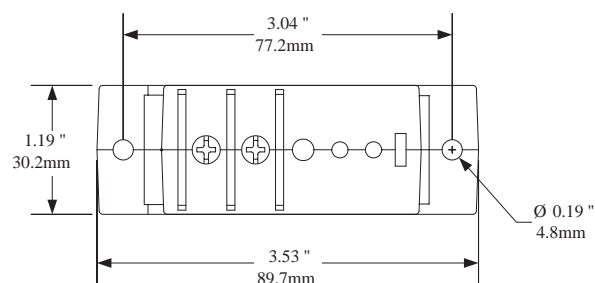
AS1		—		—	
	Output Rating		Case Style		Options
	NOU Normally Open		FF Fixed Core, Front Term.		GO Go/No-Go Version (Fixed Setpoint)
	NCU Normally Closed		FT Fixed Core, Top Term.		NL No LED
			SP Split-core		— With LED (Blank)



FF Case



FT Case



SP Case

Current Operated Switches

AS1 Series

PAGE 2